



Vocabulary

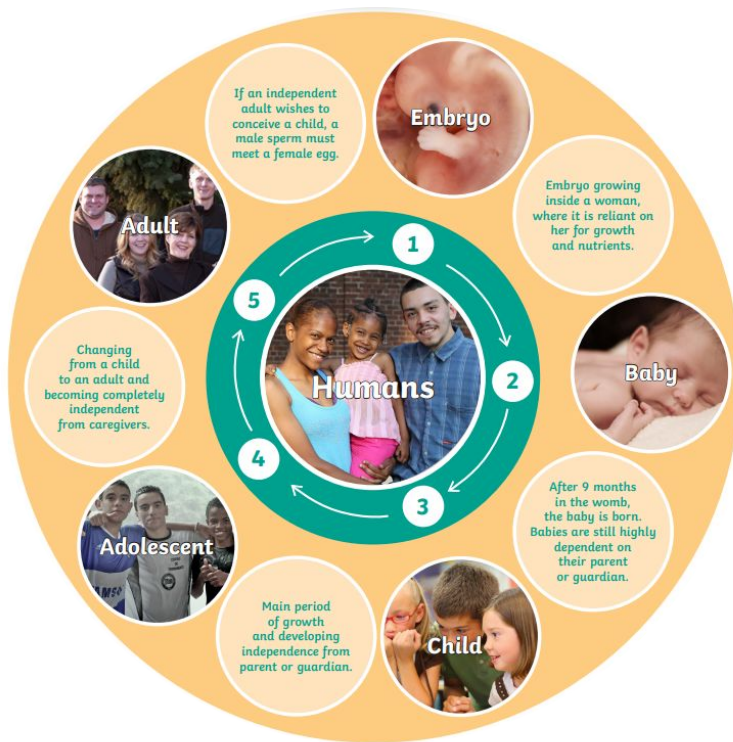
Tier 1	Tier 2	Tier 3
Human	Hormones	Prenatal
Growth	Reproduction	Adolescence
Development	Physical	Adulthood
Age	Social	Puberty
Life cycle	Emotional	Foetus
Stage	Psychological	Gestation

● don't know
 ● I know this word
 ● I can use it in a sentence

Science – Year 5

Animals, Including Humans

(Previous knowledge – refer to Knowledge Organiser Year 4 – Animals, Including Humans)



Gestation

is the period of time that a mammal carries offspring, or babies, inside the body before giving birth. The length of gestation is different for each type of mammal.

Prior learning

Year 4 - Animals and their life cycles, primary and secondary consumers.
Year 3 - Omnivores, Carnivores and herbivores and a healthy diet. What do animals need to survive?

Key Questions/Facts

What are the stages of the human lifecycle?

- **Prenatal**: before birth. This stage is from the time of fertilisation to birth.
- **Adolescent**: is a young person aged between 10 and 19. During this stage of development, puberty results in changes in the body.
- **Early adulthood**: This stage takes place from the ages of 18 to 39. The human body is at its peak of fitness and strength. This is the age at which most humans reproduce.
- **Middle Adulthood**: This stage takes place between 40 and 59 years of age. Women experience menopause in their 40s or 50s when they no longer produce eggs.
- **Late adulthood/ Old Age**: This is the last stage of and takes place after the age of 60. The body declines in fitness and health.

What changes take place during puberty?

- Puberty is the stage of development between childhood and adulthood.
- Physical growth occurs so that the body changes to that of an adult, which enables reproduction.

What changes take place during old age?

- Our cells do not regenerate as quickly in old age. This makes the immune system weaker and less able to fight diseases.

How long do animals live?

- Life expectancy is the length of time that a particular animal is expected to live.

Asking questions
Asking questions that can be answered using a scientific enquiry.

Making predictions
Using prior knowledge to suggest what will happen in an enquiry.

Setting up tests
Deciding on the method and equipment to use to carry out an enquiry.

Observing and measuring
Using senses and measuring equipment to make observations about the enquiry.

Recording data
Using tables, drawings and other means to note observations and measurements.

Interpreting and communicating results
Using information from the data to say what you found out.

Evaluating
Reflecting on the success of the enquiry approach and identifying further questions for enquiry.