



ART
Year 5
Summer 1
Space Artist Research

Vocabulary

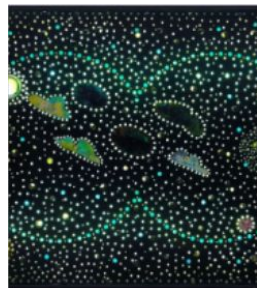
| Tier 1 | Tier 2 | Tier 3 |
|--------|-------------|---------------|
| Moon | Texture | Stippling |
| Stars | Shading | Crater |
| Dots | Blending | Lunar surface |
| Dark | Composition | Celestial |
| Shape | Contrast | |

John Russell and Gyula Kosice

These artists are from different time periods, however have both taken inspiration from the sky. This half term children will compare these artist and their approaches and have a chance to be critical in the way they analyse artwork.

Key skills:

This half term, children will be considering the impact of differing artists and how space can be used in a variety of ways as inspiration for art.



Key questions

How many personal exhibitions did Gyula Kosice host during his lifetime?

He hosted more than 40 personal exhibitions.

In how many collective exhibitions did he participate worldwide?

He participated in 500 collective exhibitions all over the world.

What were his major contributions to the kinetic art movement in Argentina?

He is remembered for his innovative use of movement, light, and gas in kinetic art, pushing the boundaries of nonrepresentational sculpture.

What innovative materials and techniques did he use in his sculptures?

He was the first to use neon light and gas in his sculptures, creating dynamic, nonrepresentational patterns.

What types of artworks did he create using neon light and gas?

He created monumental sculptures, hydrosatial walks, and hydrowalls using these elements.



John Russell Gyula Kosice

Useful Resources

- <https://www.youtube.com/watch?v=Ogab1m9F2BA>
- <https://www.youtube.com/watch?v=DGNgeKMvoGk>