



## ART – Year 6 Spring 1

### Hokusai - Culture, sketching and painting

#### Vocabulary

Tier 1	Tier 2	Tier 3
artist	colour palette	Edo period
sketching	medium	culture
drawing	Hokusai	observations
watercolour	traditions	perspective
line	layering	horizon
shading	texture	gradient

● don't know   
 ● I know this word   
 ● I can use it in a sentence

#### Key Questions

How does this piece of artwork make you feel? Why do you think Hokusai chose to create this piece of art? What elements of Japan inspired Hokusai? How do you think Hokusai's work reflects Japanese culture and traditions? What techniques did Hokusai use to make his artwork so striking and memorable? How does Hokusai show movement and energy in his artwork?

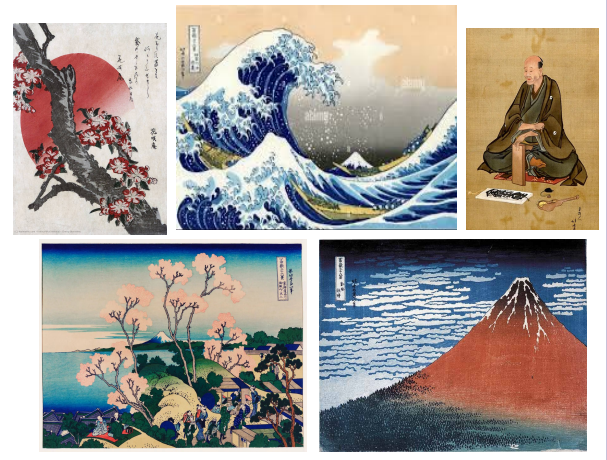
#### Useful Resources

[https://www.youtube.com/watch?v=cvqU2\\_0oHjk&ab\\_channel=KidsArtProjects101](https://www.youtube.com/watch?v=cvqU2_0oHjk&ab_channel=KidsArtProjects101)

### Our Artist

Katsushika **Hokusai** (1760–1849) was a famous **Japanese** artist and printmaker, best known for his woodblock prints. His most famous work, **The Great Wave off Kanagawa**, is part of a series called *Thirty-Six Views of Mount Fuji*. It shows towering waves crashing over small boats, with Mount Fuji in the background. This artwork is an excellent example of movement, composition, and careful use of colour.

Hokusai's art often focused on nature, particularly the beauty and power of water, mountains, and the changing seasons. His work is characterized by bold lines, vibrant colours, and detailed compositions. He was influenced by Japanese culture and traditions. His prints captured both everyday life in Japan and its landscapes, with a focus on Mount Fuji, which holds great spiritual and cultural significance in Japan.



### Sketching Techniques

**Lines:** Hokusai used bold, curved lines to outline the waves, creating a sense of power and motion. The fine, delicate lines of foam at the top of the wave look like claws, showing intricate detail.

**Shapes:** The waves are broken down into simple curves and arcs, making them visually striking. Mount Fuji in the background is drawn with a clean, triangular shape to contrast with the busy waves.

**Perspective and composition:** The large wave dominates the foreground, while Mount Fuji appears small and distant, creating depth and perspective. The boats guide the viewer's eye through the scene, showing balance and movement.

**Repetition:** Hokusai repeated curved shapes to show the rhythm and flow of the waves, which makes the scene feel alive.

### Painting Techniques

**Colour palette:** Hokusai used a limited palette of mainly blue, white, and a touch of grey to create a calm yet dramatic atmosphere. He used Prussian blue, a new pigment at the time, to give the waves their striking colour.

**Gradients (Blending Tones):** Hokusai blended light and dark tones of blue in the waves to show depth. The sky transitions from a lighter blue at the horizon to a darker shade at the top, creating a gradient that suggests distance and weather.

**Contrast:** The deep blue waves sharply contrast with the white foam, making the waves look more powerful. Mount Fuji is painted in softer, muted tones, helping it stand out against the waves.

**Layering:** The print shows layers of waves, boats, and Mount Fuji. Each layer builds on the previous one to add depth and movement. The layering of darker waves on lighter tones creates a sense of shadow and highlights.

**Focus on Texture:** The foam of the waves is carefully detailed to look rough and dynamic, while the sky and Mount Fuji are smoother and more serene.

## Painting Techniques

1. **Colour Palette**
  - Hokusai used a **limited palette** of mainly blue, white, and a touch of grey to create a calm yet dramatic atmosphere.
  - He used **Prussian blue**, a new pigment at the time, to give the waves their striking colour.
2. **Gradients (Blending Tones)**
  - Hokusai blended light and dark tones of blue in the waves to show depth.
  - The sky transitions from a lighter blue at the horizon to a darker shade at the top, creating a gradient that suggests distance and weather.
3. **Contrast**
  - The deep blue waves sharply contrast with the white foam, making the waves look more powerful.
  - Mount Fuji is painted in softer, muted tones, helping it stand out against the waves.
4. **Layering**
  - The print shows layers of waves, boats, and Mount Fuji. Each layer builds on the previous one to add depth and movement.
  - The layering of darker waves on lighter tones creates a sense of shadow and highlights.
5. **Focus on Texture**
  - The foam of the waves is carefully detailed to look rough and dynamic, while the sky and Mount Fuji are smoother and more serene.