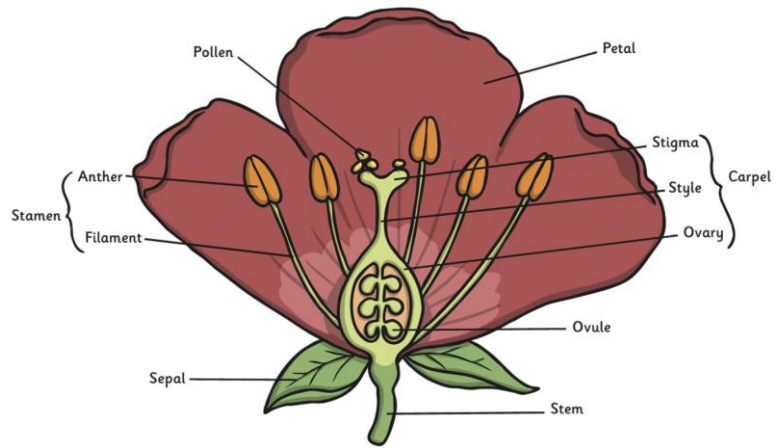




Science – Year 5 Spring 1
Living Things and Their Habitats

Vocabulary		
Tier 1	Tier 2	Tier 3
Life cycle	Reproduce	Fertilisation
Bird	Stamen	Gestation
Insect	Style	Pollination
Plant	Ovule	Reproduction

● don't know
 ● I know this word
 ● I can use it in a sentence



How Do Plants Reproduce?

- Most plants contain both the male sex stamen ovule cell (pollen) and female sex cell style (ovules). Wind and insects help to transfer pollen to a different plant.
 - The pollen from the stamen of one plant is transferred to the stigma of another.
- Some plants use asexual reproduction to create a new plant. They are identical to the parent plant.

- Useful Resources
- Plants to dissect and label the different parts.
 - Animal picture cards to sort and classify.
 - Pictures and video clips of plants and animals to observe their features and habitats.

Key Questions/Facts

How do plants and animals reproduce?

- Asexual reproduction: one parent is needed to create an offspring, which is an exact copy of the parent.
- Sexual reproduction: Two parents are needed to make offspring which are similar but not identical to either parent.

What are some of the differences in the life cycles of different creatures?

- Humans develop inside their mothers and are dependent on their parents for many years until they are old enough to look after themselves.
- Amphibians such as frogs are laid in eggs then, once hatched, go through many changes until they become an adult.
- Some insects, such as butterflies, go through metamorphosis to become an adult.
- Birds hatch from eggs and are looked after by their parents until they can live independently.

How do mammals reproduce?

- Mammals use sexual reproduction to produce their offspring.
- The male sex cell, called the sperm, fertilises the female sex cells.

Scientific Enquiry Skills

- Asking questions**
Asking questions that can be answered using a scientific enquiry.
- Making predictions**
Using prior knowledge to suggest what will happen in an enquiry.
- Setting up tests**
Deciding on the method and equipment to use to carry out an enquiry.
- Observing and measuring**
Using senses and measuring equipment to make observations about the enquiry.
- Recording data**
Using tables, drawings and other means to note observations and measurements.
- Interpreting and communicating results**
Using information from the data to say what you found out.
- Evaluating**
Reflecting on the success of the enquiry approach and identifying further questions for enquiry.