

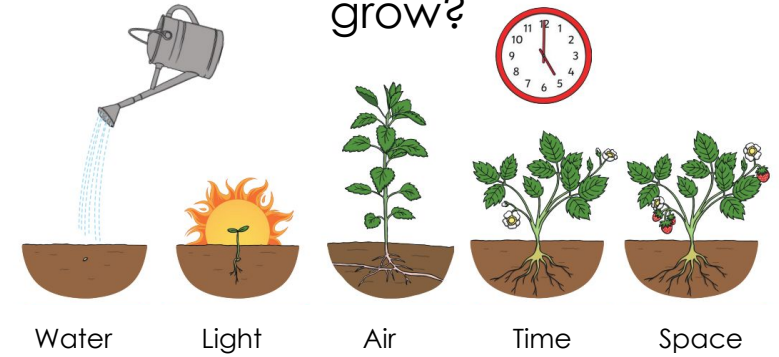


Science – Year 2  
Autumn 2  
Into The Woods  
(Previous knowledge – exploring plants)

**Our Scientist**  
Janaki Ammal  
was an Indian  
Botanist.



What does a plant need to grow?

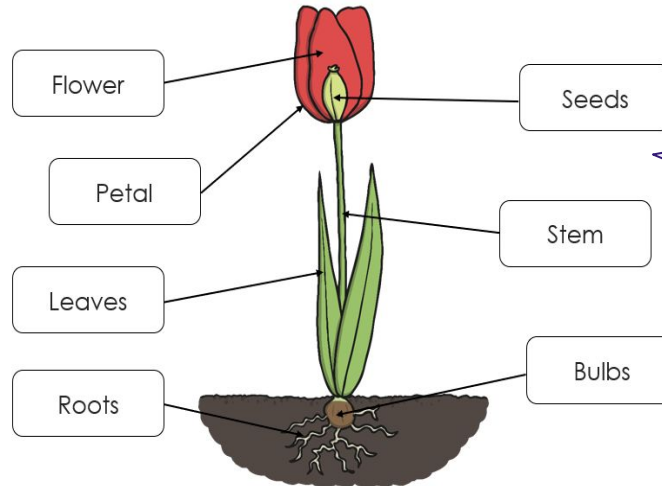


Vocabulary

Tier 1	Tier 2	Tier 3
Stem	Nutrients	Germination
Roots	Season	Botanist
Petals	Seeds	Reproduce
Leaves	Bulb	Pollen
Temperature	Flowering	Pollination

● don't know   
 ● I know this word   
 ● I can use it in a sentence

The different parts of a plant.



Is the life cycle of a flowering plant, the same as a tree?

Useful Resources

- Seeds to grow to investigate the life cycle of a plant.
- Seeds and bulbs to observe and compare.

Will different continents have different plants and trees?

Scientific Enquiry Skills

- Asking questions** (???)  
Asking questions that can be answered using a scientific enquiry.
- Making predictions** (🗨️)  
Using prior knowledge to suggest what will happen in an enquiry.
- Setting up tests** (📋)  
Deciding on the method and equipment to use to carry out an enquiry.
- Observing and measuring** (🔍)  
Using senses and measuring equipment to make observations about the enquiry.
- Recording data** (📝)  
Using tables, drawings and other means to note observations and measurements.
- Interpreting and communicating results** (📢)  
Using information from the data to say what you found out.
- Evaluating** (⚙️)  
Reflecting on the success of the enquiry approach and identifying further questions for enquiry.